

- SOFFIT LINE
- BEAM LINE
- [Symbol] = CEILING DUPLEX
- [Symbol] = CEILING QUADRAPLEX
- [Symbol] = ROUND SPEAKER
- [Symbol] = SQUARE SPEAKER
- [Symbol] = EXHAUST FAN w/o LIGHT
- [Symbol] = EXHAUST FAN w/ LIGHT
- [Symbol] = CEILING FAN w/o LIGHT
- [Symbol] = CEILING FAN w/ LIGHT
- [Symbol] = FLUORESCENT LIGHT
- [Symbol] = TRACK LIGHTING
- [Symbol] = CEILING MOUNTED FIXTURE
- [Symbol] = RECESSED FIXTURE
- [Symbol] = HANGING FIXTURE
- [Symbol] = WALL MOUNTED FIXTURE
- [Symbol] = EXTERIOR WALL FIXTURE
- [Symbol] = CEILING J-BOX
- [Symbol] = MOTION DETECTOR
- [Symbol] = MISC. EQUIPMENT
- [Symbol] = DOME SECURITY CAMERA
- [Symbol] = WIFI BOOSTER
- [Symbol] = CEILING MOUNTED CAMERA
- [Symbol] = COVER PLATE
- [Symbol] = HVAC SUPPLY VENT
- [Symbol] = HVAC RETURN VENT
- [Symbol] = ROUND SUPPLY VENT
- [Symbol] = CEILING HATCH
- [Symbol] = SMOKE ALARM
- [Symbol] = STROBE LIGHT
- [Symbol] = EXIT SIGN
- [Symbol] = EMERGENCY LIGHT w/o EXIT
- [Symbol] = EMERGENCY LIGHT w/ EXIT
- [Symbol] = SPRINKLER
- [Symbol] = HEAT DETECTOR



PREPARED FOR

CLIENT

PROJECT TYPE

REFLECTED
CEILING PLAN

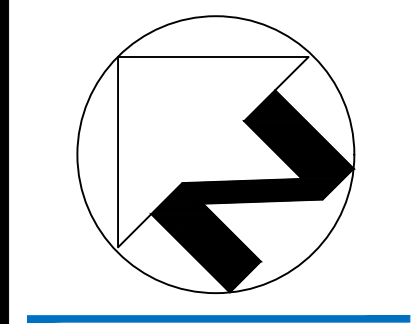
PROJECT NAME

LARGE SFR
SAMPLE

PROJECT ADDRESS

1234 PRECISION
BOULEVARD
CITY, CA 00000

All plans created by Precision Property Measurements, LLC ("PPM") are made exclusively for the purposes of the project and are not to be used for any other purpose. PPM does not warrant the accuracy of the information provided on these plans. PPM makes every reasonable effort to ensure the accuracy of the information provided on these plans. However, some errors may occur due to human error or other factors. PPM is not responsible for any errors or omissions on these plans. The user of these plans is advised to verify all information before construction. PPM's liability is limited to the amount of the fee paid to PPM.



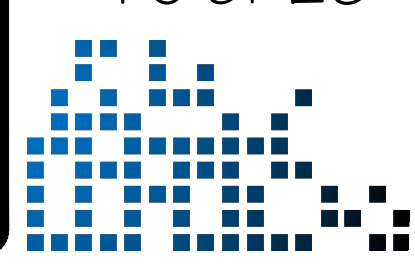
SCALE
1/4" = 1'-0"

PROJECT
XXXX_XX

APPROVED BY
XX

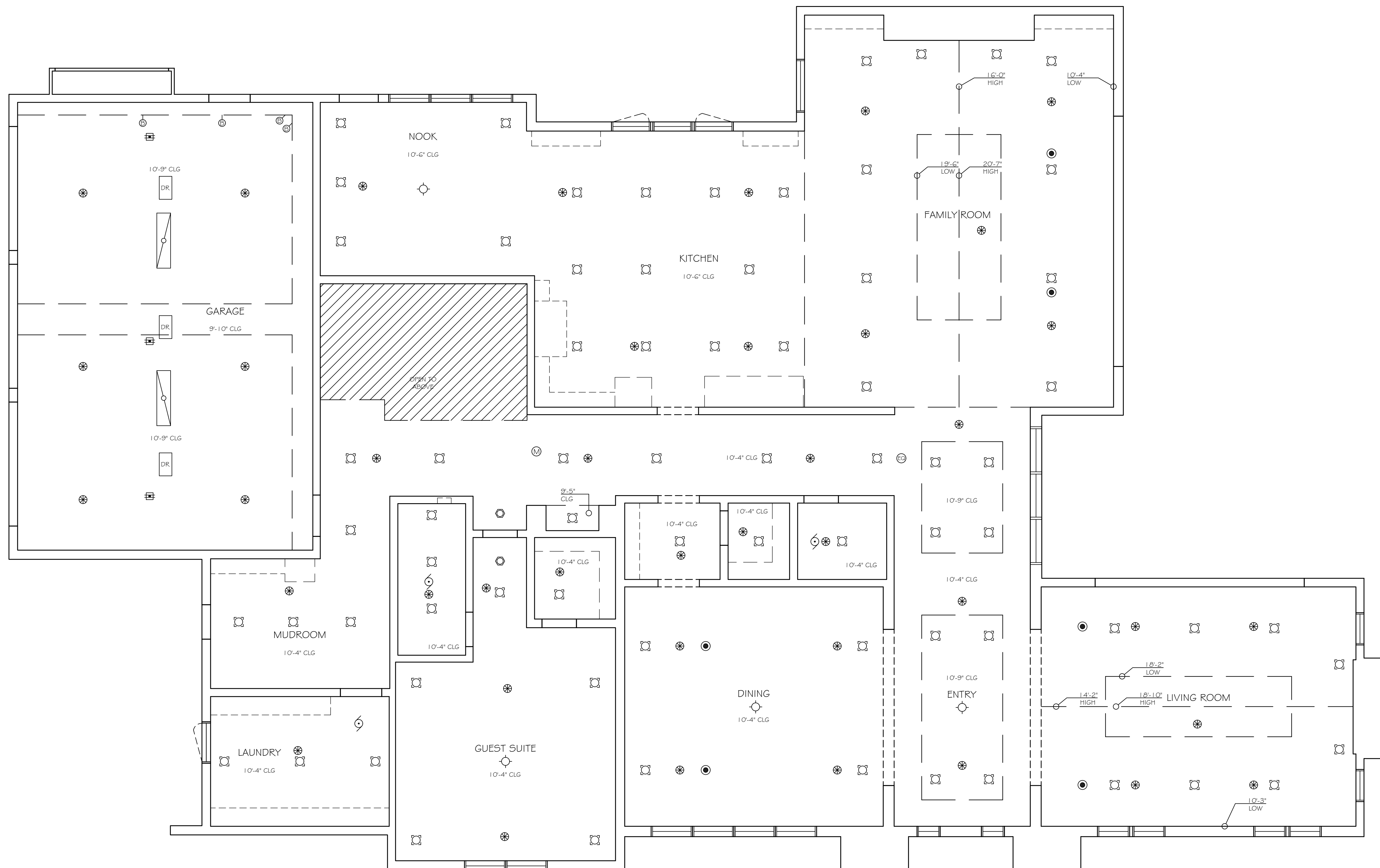
DATE
XX/XX/XX

SHEET
10 of 25



BASEMENT

- SOFFIT LINE —
- BEAM LINE —
- = CEILING DUPLEX
- = CEILING QUADRAPLEX
- = ROUND SPEAKER
- = SQUARE SPEAKER
- = EXHAUST FAN w/o LIGHT
- = EXHAUST FAN w/ LIGHT
- = CEILING FAN w/o LIGHT
- = CEILING FAN w/ LIGHT
- = FLUORESCENT LIGHT
- = TRACK LIGHTING
- = CEILING MOUNTED FIXTURE
- = RECESSED FIXTURE
- = HANGING FIXTURE
- = WALL MOUNTED FIXTURE
- = EXTERIOR WALL FIXTURE
- = CEILING J-BOX
- = MOTION DETECTOR
- = MISC. EQUIPMENT
- = DOME SECURITY CAMERA
- = WIFI BOOSTER
- = CEILING MOUNTED CAMERA
- = COVER PLATE
- = HVAC SUPPLY VENT
- = HVAC RETURN VENT
- = ROUND SUPPLY VENT
- = CEILING HATCH
- = SMOKE ALARM
- = STROBE LIGHT
- EXIT — = EXIT SIGN
- = EMERGENCY LIGHT w/o EXIT
- = EMERGENCY LIGHT w/ EXIT
- = SPRINKLER
- = HEAT DETECTOR



1st FLOOR

CLIENT

PROJECT TYPE

REFLECTED CEILING PLAN

PROJECT NAME

LARGE SFR SAMPLE

PROJECT ADDRESS

1234 PRECISION
BOULEVARD
CITY, CA 00000

All plans created by Precision Property Measurements use PPM's own field measurements for landscaping purposes. See also PPM's Code of Ethics. All data provided by PPM are not intended to be used as a substitute for a licensed structural engineer or licensed architect. PPM makes every reasonable effort to ensure the accuracy of the information provided in our plans. However, some of the drawings are not intended to be used as a substitute for a licensed structural engineer or licensed architect. PPM makes every reasonable effort to ensure the accuracy of the information provided in our plans. However, some of the drawings are not intended to be used as a substitute for a licensed structural engineer or licensed architect. PPM makes every reasonable effort to ensure the accuracy of the information provided in our plans. However, some of the drawings are not intended to be used as a substitute for a licensed structural engineer or licensed architect. PPM makes every reasonable effort to ensure the accuracy of the information provided in our plans. However, some of the drawings are not intended to be used as a substitute for a licensed structural engineer or licensed architect. PPM makes every reasonable effort to ensure the accuracy of the information provided in our plans. However, some of the drawings are not intended to be used as a substitute for a licensed structural engineer or licensed architect.

SCALE
1/4" = 1'-0"

PROJECT
XXXX_XX

APPROVED BY
XX

DATE
XXXX/XX

SHEET
11 of 25

- SOFFIT LINE
- BEAM LINE
- ⊕ = CEILING DUPLEX
- ⊞ = CEILING QUADRAPLEX
- = ROUND SPEAKER
- ⊞ = SQUARE SPEAKER
- ⊞ = EXHAUST FAN w/o LIGHT
- ⊞ = EXHAUST FAN w/ LIGHT
- ⊞ = CEILING FAN w/o LIGHT
- ⊞ = CEILING FAN w/ LIGHT
- ⊞ = FLUORESCENT LIGHT
- ⊞ = TRACK LIGHTING
- ⊞ = CEILING MOUNTED FIXTURE
- ⊞ = RECESSED FIXTURE
- ⊞ = HANGING FIXTURE
- ⊞ = WALL MOUNTED FIXTURE
- ⊞ = EXTERIOR WALL FIXTURE
- ⊞ = CEILING J-BOX
- ⊞ = MOTION DETECTOR
- ⊞ = MISC. EQUIPMENT
- ⊞ = DOME SECURITY CAMERA
- ⊞ = WIFI BOOSTER
- ⊞ = CEILING MOUNTED CAMERA
- ⊞ = COVER PLATE
- ⊞ = HVAC SUPPLY VENT
- ⊞ = HVAC RETURN VENT
- ⊞ = ROUND SUPPLY VENT
- ⊞ = CEILING HATCH
- ⊞ = SMOKE ALARM
- ⊞ = STROBE LIGHT
- EXIT = EXIT SIGN
- ⊞ = EMERGENCY LIGHT w/o EXIT
- ⊞ = EMERGENCY LIGHT w/ EXIT
- ⊞ = SPRINKLER
- ⊞ = HEAT DETECTOR

PREPARED FOR

CLIENT

PROJECT TYPE

REFLECTED CEILING PLAN

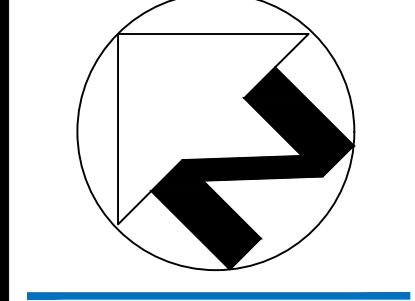
PROJECT NAME

LARGE SFR SAMPLE

PROJECT ADDRESS

1234 PRECISION BOULEVARD
CITY, CA 00000

All plans created by Precision Property Measurements use PPM's own field accuracy for landscaping purposes. CA, Inc. a Prof. Code 80727. All data plans created by PPM do not make the determination of any property line, and as such do not constitute a land survey. CA, Inc. a Prof. Code 80727. In addition, PPM services and plans do not constitute an engineering CA, Inc. a Prof. Code 80727. All data plans created by PPM are intended to be used as a reference for design and construction and should not be considered a substitute for the services of a licensed structural engineer or licensed architect. PPM makes every reasonable effort to ensure the accuracy of its information based on its data. However, some of the drawing information cannot be seen in some degree. It is the duty of the architect, contractor, designer or other licensed professional, as a consultant to the property owner, to determine the suitability of the As-Built plans prior to construction. Measurements should be field confirmed before commencing construction. In the event that an error is found on a plan, PPM's liability is limited to the amount of the fee paid to PPM.



SCALE
1/4" = 1'-0"

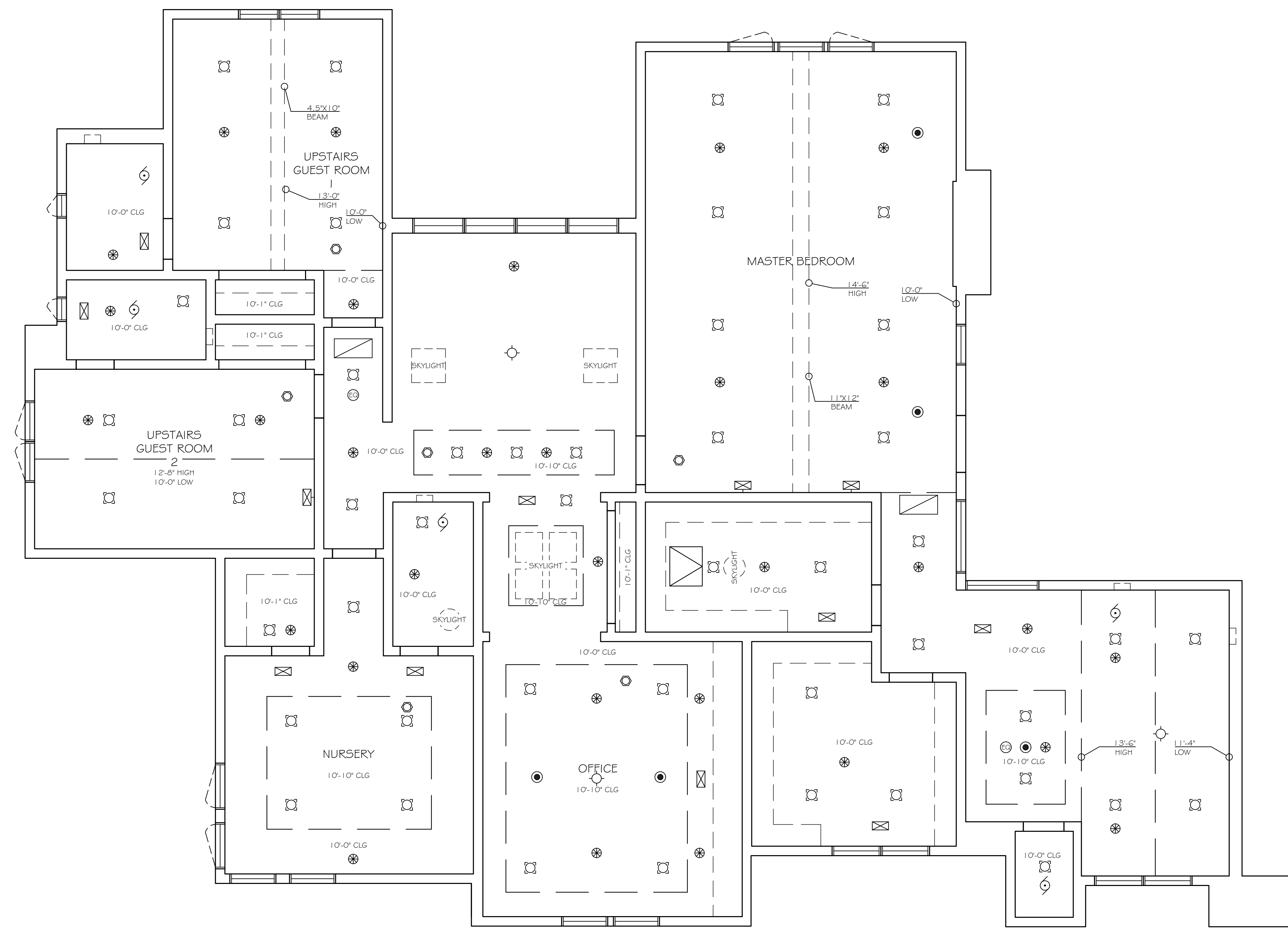
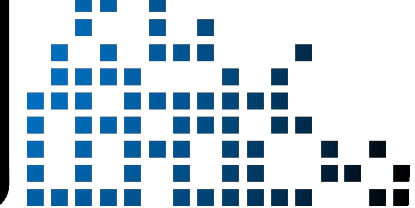
PROJECT
XXXX_XX

APPROVED BY
XX

DATE
XX/XX/XX

SHEET

12 of 25



2nd FLOOR

- SOFFIT LINE
- BEAM LINE
- [Symbol] = CEILING DUPLEX
- [Symbol] = CEILING QUADRAPLEX
- [Symbol] = ROUND SPEAKER
- [Symbol] = SQUARE SPEAKER
- [Symbol] = EXHAUST FAN w/o LIGHT
- [Symbol] = EXHAUST FAN w/ LIGHT
- [Symbol] = CEILING FAN w/o LIGHT
- [Symbol] = CEILING FAN w/ LIGHT
- [Symbol] = FLUORESCENT LIGHT
- [Symbol] = TRACK LIGHTING
- [Symbol] = CEILING MOUNTED FIXTURE
- [Symbol] = RECESSED FIXTURE
- [Symbol] = HANGING FIXTURE
- [Symbol] = WALL MOUNTED FIXTURE
- [Symbol] = EXTERIOR WALL FIXTURE
- [Symbol] = CEILING J-BOX
- [Symbol] = MOTION DETECTOR
- [Symbol] = MISC. EQUIPMENT
- [Symbol] = DOME SECURITY CAMERA
- [Symbol] = WIFI BOOSTER
- [Symbol] = CEILING MOUNTED CAMERA
- [Symbol] = COVER PLATE
- [Symbol] = HVAC SUPPLY VENT
- [Symbol] = HVAC RETURN VENT
- [Symbol] = ROUND SUPPLY VENT
- [Symbol] = CEILING HATCH
- [Symbol] = SMOKE ALARM
- [Symbol] = STROBE LIGHT
- [EXIT] = EXIT SIGN
- [Symbol] = EMERGENCY LIGHT w/o EXIT
- [Symbol] = EMERGENCY LIGHT w/ EXIT
- [Symbol] = SPRINKLER
- [Symbol] = HEAT DETECTOR

3626 E. PACIFIC COAST
HIGHWAY | 2ND FLOOR
LONG BEACH CA | 90804
T 562.621.9100
F 888.698.2966
WWW.PPMCO.NET



PREPARED FOR

CLIENT

PROJECT TYPE

REFLECTED
CEILING PLAN

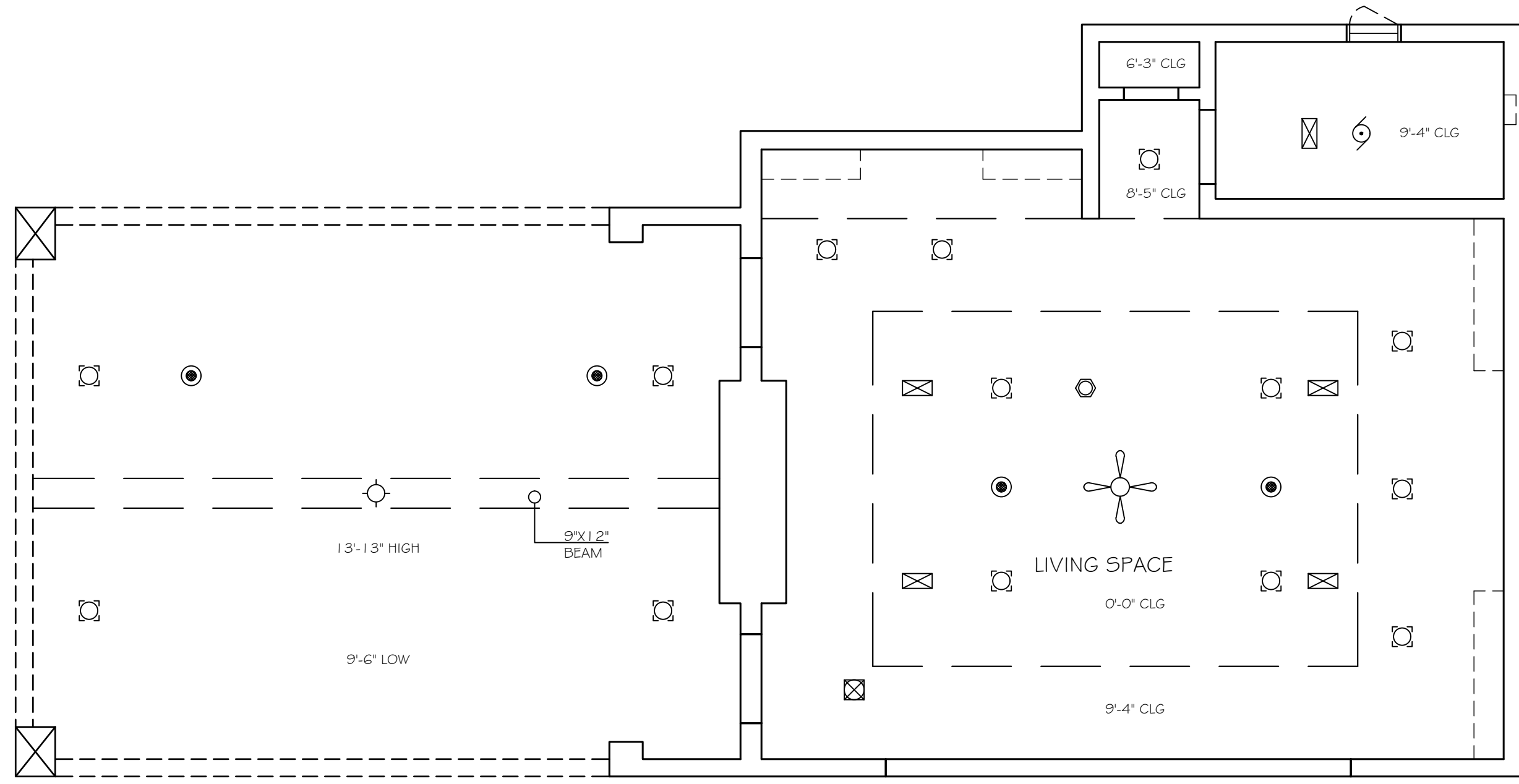
PROJECT NAME

LARGE SFR
SAMPLE

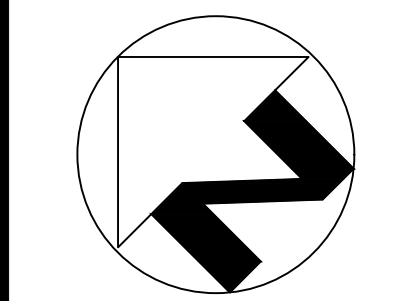
PROJECT ADDRESS

1234 PRECISION
BOULEVARD
CITY, CA 00000

All plans created by Precision Property Measurements, LLC ("PPM") are made exclusively for landscaping purposes (CA, Title 4 Prof. Code 86727). All data points created by PPM do not indicate the determination of any property line, and as such do not constitute legal boundaries. (CA, Title 4 Prof. Code 86726.2(b)(3)). In addition, PPM surveys and plans do not constitute our engineering (CA, Title 4 Prof. Code 86702.2(b)(4)), and this should not be used for any activity or activities defined as our engineering (CA, Title 4 Prof. Code 86731). All floor plans created by PPM are intended to be used as a reference for design and construction and should not be considered a substitute for the services of a licensed structural engineer or licensed architect. PPM makes every reasonable effort to ensure the accuracy of its information based on data, however, some field drawings inevitably contain errors to some degree. It is the duty of the architect, contractor, designer or other licensed professional, as a consultant to the property owner, to determine the suitability of the As-Built plans prior to construction. Measurements should be field confirmed before commencing construction, in the event that an error is found on a plan, PPM's liability is limited to the amount of the fee paid to PPM.



POOL HOUSE



SCALE
1/4" = 1'-0"

PROJECT
XXXX_XX

APPROVED BY
XX

DATE
XX/XX/XX

SHEET

13 of 25

